

Academic Practices Team Mtg - 5/13/25

Committee Members: Meghan Booth (Erdkinder Coordinator), Kim Bell (Special Education Teacher), Angela Kaul (E2A Teacher), Kris Swogger (Reading Title and EL Teacher), Amy Schillerstrom (E1A Teacher), Henry Schantzen (Head of School), Anna Aarre (CH3 Teacher), Sherry Lohmeyer (Assistant Head of School)

Bluffview Montessori Vision Statement

Empowered learners unfolding their full potential as whole and unique persons in a global community.

Bluffview Montessori Mission

Bluffview Montessori School empowers self-directed learning through a materials-based Montessori curriculum that encourages independence and natural curiosity. Bluffview cultivates learners' deep respect for self, community, and a peaceful environment, while nourishing the intrinsic desire for academic, civic, and personal fulfillment.

Attendance:

Angela (E2 teacher), Henry (Head of School), Anna (CH teacher), Mariah (E1 teacher), Amy (E1 teacher), Kris (Interventionist), Kim (Interventionist), Meghan (ErdK teacher)

Topic	Responsible	Notes	Minutes from meeting
WELCOME! Circle Chat	2 min	To empower all voices that are present and create shared ownership and accountability in our committee work.	
Check in <ul style="list-style-type: none">Pancakes, Waffles, or French Toast?			
Online Record Keeping			
<ul style="list-style-type: none">Montessori Compass 2.0Transparent Classroom <p>Do levels have a consistent system for monitoring student mastery or does each teacher have their own system?</p> <p>Sherry proposed that a few teachers do a trial run this fall (Josh, Meghan, and Mariah were interested... Angela?)</p> <ul style="list-style-type: none">Transparent classroom seems more aligned to a K-8 school and has some Montessori standards integrated to state standards. They say (showed us) that they have MN standards in addition to CCSS. <p>Question for the group - What makes the most sense for the gradebook set up? Skills listed as Montessori Lessons OR skills listed as standards?</p> <ul style="list-style-type: none">EX Standard: 0.2.4.2 Identify and compare three-dimensional shapes cubes, cones, cylinders and spheres using informal language to describe their similarities, differences, parts and other attributes. (MP2) ✚ ☀			

- Three Dimensional Solids

Questions/Concerns?

- The teachers involved in the demo were concerned about having “grades” readily available to parents. The idea being that in Montessori, the focus should be on progress and that all children develop differently. That group suggested that online “record keeping” might help interventionists see how their kids are progressing in skills, and allow easy to produce documents to use during conferences rather than a communication tool for parents. **How do you think you/your level would feel about an online record book? How do you feel about parent access?**

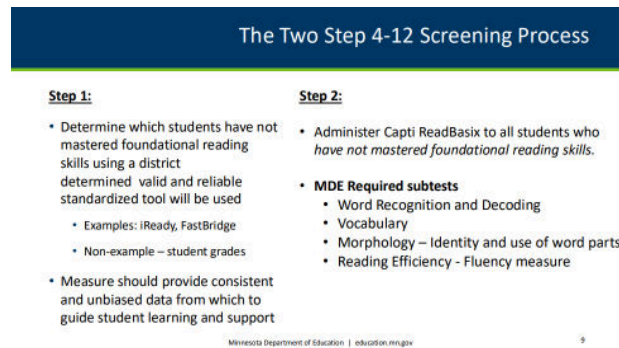
Mentor/Mentee Handbook Review

[Responsibilities List](#)

Take a moment and review/refresh.... What is missing, what needs to be adjusted?

Dyslexia Screening

- Districts must provide evidence-based interventions for all students who are reading below grade level and regularly monitor their progress until they achieve grade-level proficiency.
- Encourage family and community engagement
- Districts are encouraged to provide reading interventions through the MnMTSS Framework
- Starting in the 2025-26 school year, only evidence-based literacy interventions may be used
- Interventions must be taught by staff who have completed [Read Act] training from the approved list by 2026-27 school year



Considerations for Fall

- Replacement for Kim

Additional New Business

[Math K-2 descriptors from MDE](#)

Closing			
Y'all are amazing. Happy Summer (almost).			

Notes:

Check In

- We love breakfast!

Online Recording

- Montessori Compass
 - Concerns are that we'd have to customize and geared more toward younger students
- Leaning toward Transparent Classroom
 - Montessori lessons match Common Core standards
 - One at each level will try it out
- Have option to set up by Montessori Lesson or by Standards, which makes the most sense
 - Montessori works would cross over better - 3 preferred (CH/E1)
 - With turnover, it would be easier to use standards - 2 preferred (E2/ErdK)
 - Can it be leveled? - Follow up question to ask the company
- Concerns included availability to parents
 - Unlimited access to parents? - 1 (Henry)
 - Limited access for parents? - 6 (Teachers)
 - Considering parents who are looking for instant feedback/grades
 - Making sure parents understand the grading system (introduced to the concept vs mastery of the concept)
 - Wouldn't be open while it is being piloted

Mentor/Mentee Discussion

- Add? Nov - RTI, review test scores and how to use them in the blue
- Change - Oct - how to ... instead of who

Dyslexia Screening

- Starts grades 4-12 next year
- Platform will be a 2nd step screener (anyone who falls into an intervention will complete this screener)
- Once a year thing
- Need to be screened by someone who has completed the READ Act requirement

Who will assist Meghan moving forward next year?

- Henry has offered to be secretary next year
- Need a co-chair yet

Math Discriptors

- Teams look at it
- Gives standards and what a student looks like in each category