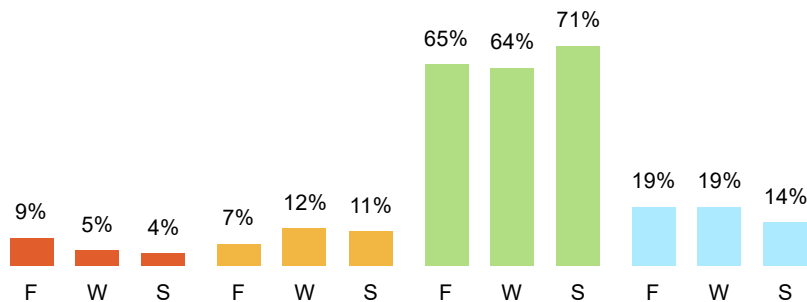


Group Screening Report: aMath

👁️ UPDATED VIEW

2021-2022 : Norms  
Spring

Scores Of Students In Group By Normative Categories: ?



Grade	Median Student			Spring Percentile Rank	
	Fall Score	Winter Score	Spring Score	District Score	National Score
ONE			186	0	4
TWO	28 24 40 8(%)	12 20 56 12(%)	8 28 48 16(%)	50	37
THREE	4 8 68 20(%)	4 16 52 28(%)	0 4 81 15(%)	47	61
FOUR	8 8 67 17(%)	4 13 71 12(%)	4 17 70 9(%)	50	53
FIVE	4 0 75 21(%)	0 8 79 13(%)	0 4 79 17(%)	49	53
SIX	8 8 52 32(%)	8 8 46 38(%)	4 9 64 23(%)	49	56
SEVEN	0 0 82 18(%)	0 14 73 13(%)	0 9 82 9(%)	50	60
EIGHT	6 0 75 19(%)	6 6 76 12(%)	6 6 76 12(%)	50	55
Average	215.45	218.53	216.38	43.13	47.38
Median	217.77	219.99	220.13	49.50	54.00

Standard Deviation	11.34	10.31	15.11	17.46	19.01
Min	194.32	201.51	186.24	0.00	4.00
Max	226.48	231.42	230.99	50.00	61.00

■ 0-19.99 %ile
 ■ 20-29.99 %ile
 ■ 30-84.99 %ile
 ■ 85 %ile and Above

There is a standard error rate for all scores which varies by measure. See the [knowledge base](#) for more information.

To enhance FAST system speed and performance, all percentile calculations are updated nightly from the day's assessment activities. Percentile calculations in this report reflects the prior day's scores.

2021-22 / [View Montessori School](#) / [Brainiac Montessori Center](#)  
**Group Growth Report: aMath**

START:  
2021-2022 : Fall

END:  
2021-2022 : Spring

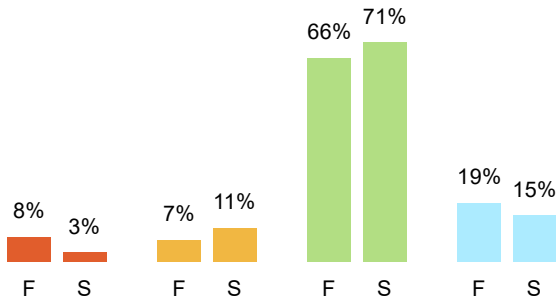
GROWTH %ILES:  
Growth by Start Score

COLOR CODING:  
Norms

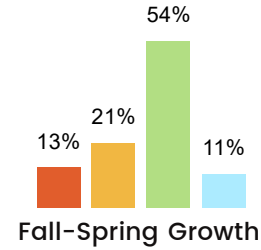
GROWTH:  
Monthly

END OF YEAR GOAL:  
Next Highest

Scores Of All Students In Group  
By Normative Categories: ?



Growth Of All Students In Group  
By Normative Categories: ?



Grade Level	Median Student		Monthly Observed Median Growth		Monthly Goal Median Growth		End of Year		
	Fall Score	Spring Score	Score	%ile	Score	%ile	Predicted Score	Goal Score	Benchmark Score
ONE	-	-	-	-	-	-	-	-	-
TWO	194	204	1.14	61	6.03	-	204.3	205.0	205.0
THREE	208	214	0.66	39	-24.01	-	213.7	215.0	209.0
FOUR	215	217	0.42	26	-26.82	-	217.2	222.0	213.0
FIVE	218	223	0.82	48	58.29	-	223.0	229.0	218.0
SIX	221	226	0.42	38	8.36	-	225.8	231.0	220.0
SEVEN	226	231	0.15	33	-	-	230.9	233.2	222.4
EIGHT	226	230	0.28	53	-	-	230.0	235.0	224.4
<b>Average</b>	215.42	220.68	0.56	-	4.37	-	220.70	224.31	215.97
<b>Median</b>	217.77	223.10	0.42	-	6.03	-	223.05	229.00	218.00
<b>Standard Deviation</b>	11.29	9.65	0.34	-	34.29	-	9.61	10.99	7.19
<b>Min</b>	194.32	204.15	0.15	-	-26.82	-	204.26	205.00	205.00
<b>Max</b>	226.48	230.91	1.14	-	58.29	-	230.91	235.00	224.40

0-19.99 %ile

20-29.99 %ile

30-84.99 %ile

85 %ile and Above

n/a student assessed outside the screening window

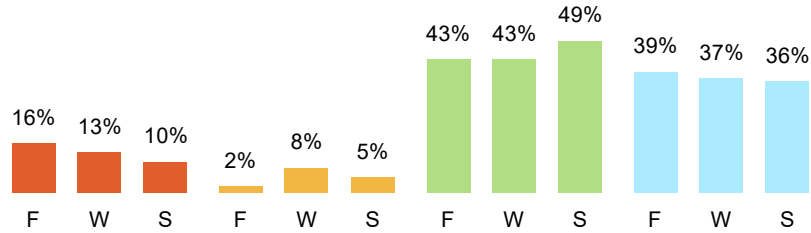
National norms are based on the aggregated data from FAST users. They do not necessarily conform to the demographic distribution in the census. There is a standard error rate for all scores which varies by measure. See the knowledge base for more information.

Group Screening Report: aReading

👁️ UPDATED VIEW

2021-2022 : Norms  
Spring

Scores Of Students In Group By Normative Categories: ?



Grade	Median Student			Spring Percentile Rank	
	Fall Score	Winter Score	Spring Score	District Score	National Score
ONE			405	0	2
TWO	442	473	487	50	35
THREE	508	516	524	50	83
FOUR	523	524	536	49	85
FIVE	538	536	540	49	76
SIX	543	543	546	49	78
SEVEN	539	544	550	49	72
EIGHT	557	559	557	49	73
Average	521.28	527.88	518.05	43.13	63.00
Median	537.52	536.25	537.88	49.00	74.50

Standard Deviation	38.23	28.09	50.59	17.43	29.19
Min	442.02	472.71	405.06	0.00	2.00
Max	557.24	559.48	556.72	50.00	85.00

■ 0-19.99 %ile
 ■ 20-29.99 %ile
 ■ 30-84.99 %ile
 ■ 85 %ile and Above

There is a standard error rate for all scores which varies by measure. See the [knowledge base](#) for more information.

To enhance FAST system speed and performance, all percentile calculations are updated nightly from the day's assessment activities. Percentile calculations in this report reflects the prior day's scores.

2021-22 / [View Metrics](#) / [Group Growth Report: aReading](#)

START:  
2021-2022 : Fall

END:  
2021-2022 :  
Spring

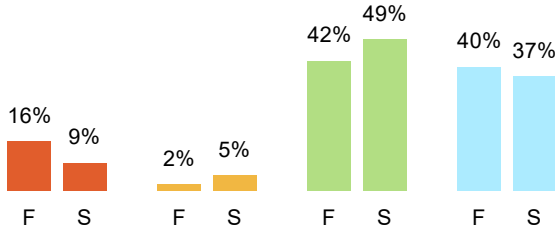
GROWTH %ILES:  
Growth by Start  
Score

COLOR CODING:  
Norms

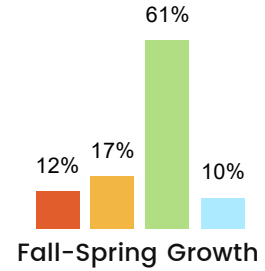
GROWTH:  
Monthly

END OF YEAR  
GOAL:  
Next Highest

Scores Of All Students In Group  
By Normative Categories: ?



Growth Of All Students In Group  
By Normative Categories: ?



Grade Level	Median Student		Monthly Observed Median Growth		Monthly Goal Median Growth		End of Year		
	Fall Score	Spring Score	Score	%ile	Score	%ile	Predicted Score	Goal Score	Benchmark Score
ONE	-	-	-	-	-	-	-	-	-
TWO	442	487	4.35	66	15.18	-	487.3	490.0	490.0
THREE	508	524	1.43	55	-81.35	-	523.6	517.0	503.0
FOUR	524	536	1.22	54	82.46	-	536.1	526.0	513.0
FIVE	538	540	0.58	37	-192.74	-	539.5	536.0	520.0
SIX	544	546	0.77	39	-300.03	-	546.3	541.0	524.0
SEVEN	539	548	0.20	28	26.38	-	548.4	548.6	532.7
EIGHT	554	557	0.68	51	33.77	-	556.7	555.1	539.3
<b>Average</b>	521.33	533.92	1.32	-	-59.48	-	533.99	530.53	517.43
<b>Median</b>	537.52	539.55	0.77	-	15.18	-	539.55	536.00	520.00
<b>Standard Deviation</b>	37.98	23.32	1.40	-	140.17	-	23.08	22.05	17.04
<b>Min</b>	442.02	486.64	0.20	-	-300.03	-	487.33	490.00	490.00
<b>Max</b>	554.36	556.72	4.35	-	82.46	-	556.69	555.10	539.30

0-19.99 %ile

20-29.99 %ile

30-84.99 %ile

85 %ile and Above

n/a student assessed outside  
the screening window

National norms are based on the aggregated data from FAST users. They do not necessarily conform to the demographic distribution in the census. There is a standard error rate for all scores which varies by measure. See the knowledge base for more information.

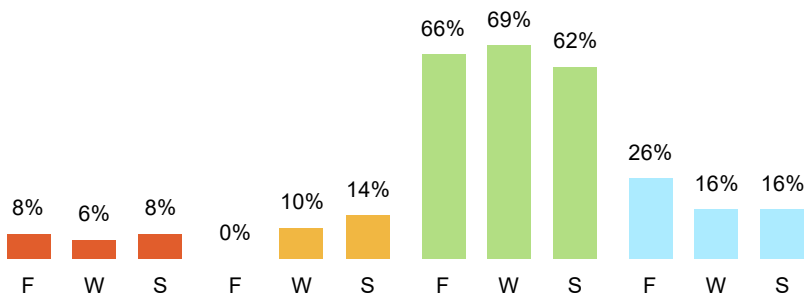


Group Screening Report: Early Math

👁 UPDATED VIEW

2021-2022 : Norms  
Spring

Scores Of Students In Group By Normative Categories: ?



Grade	Median Student			Spring Percentile Rank	
	Fall Score	Winter Score	Spring Score	District Score	National Score
KG	 12 0 68 20(%)	 4 4 81 11(%)	 4 4 72 20(%)	45	61
ONE	 4 0 64 32(%)	 8 16 56 20(%)	 12 24 52 12(%)	50	40
Average	50.50	60.25	67.50	47.50	50.50
Median	50.50	60.25	67.50	47.50	50.50
Standard Deviation	14.85	7.42	10.61	3.54	14.85
Min	40.00	55.00	60.00	45.00	40.00
Max	61.00	65.50	75.00	50.00	61.00

■ 0-19.99 %ile 
 ■ 20-29.99 %ile 
 ■ 30-84.99 %ile 
 ■ 85 %ile and Above

There is a standard error rate for all scores which varies by measure. See the [knowledge base](#) for more information.

To enhance FAST system speed and performance, all percentile calculations are updated nightly from the day's assessment activities. Percentile calculations in this report reflects the prior day's scores.

# Group Growth Report: Early Math

START:  
2021-2022 : Fall

END:  
2021-2022 :  
Spring

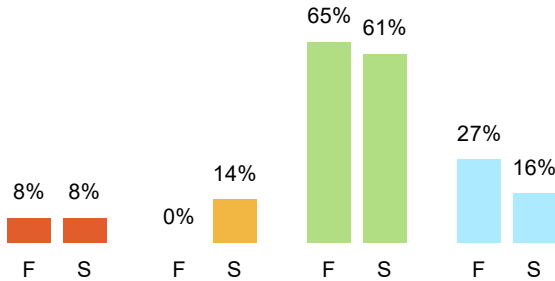
GROWTH %ILES:  
Growth by Start  
Score

COLOR CODING:  
Norms

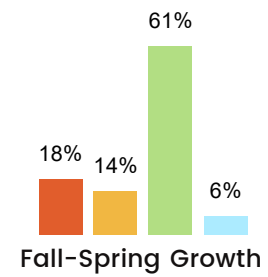
GROWTH:  
Weekly

END OF YEAR  
GOAL:  
Next Highest

### Scores Of All Students In Group By Normative Categories: ?



### Growth Of All Students In Group By Normative Categories: ?



Grade Level	Median Student		Weekly Observed Median Growth		Weekly Goal Median Growth		End of Year		
	Fall Score	Spring Score	Score	%ile	Score	%ile	Predicted Score	Goal Score	Benchmark Score
KG	40	75	0.99	45	35.00	-	74.9	65.0	65.0
ONE	61	60	0.09	29	2.80	-	60.0	60.0	60.0
<b>Average</b>	50.50	67.50	0.54	-	18.90	-	67.44	62.50	62.50
<b>Median</b>	50.50	67.50	0.54	-	18.90	-	67.44	62.50	62.50
<b>Standard Deviation</b>	14.85	10.61	0.63	-	22.77	-	10.53	3.54	3.54
<b>Min</b>	40.00	60.00	0.09	-	2.80	-	59.99	60.00	60.00
<b>Max</b>	61.00	75.00	0.99	-	35.00	-	74.88	65.00	65.00

■ 0-19.99 %ile    
 ■ 20-29.99 %ile    
 ■ 30-84.99 %ile    
 ■ 85 %ile and Above    
 n/a student assessed outside the screening window

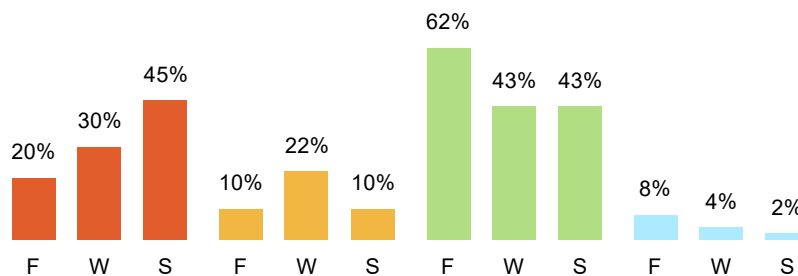
National norms are based on the aggregated data from FAST users. They do not necessarily conform to the demographic distribution in the census. There is a standard error rate for all scores which varies by measure. See the knowledge base for more information.

Group Screening Report: Early Reading English

👁️ UPDATED VIEW

2021-2022 : Norms  
Spring

Scores Of Students In Group By Normative Categories: ?



Grade	Median Student			Spring Percentile Rank	
	Fall Score	Winter Score	Spring Score	District Score	National Score
KG	 16 4 76 4(%) 34	 30 26 44 0(%) 47	 52 13 35 0(%) 57	36	18
ONE	 24 16 48 12(%) 31	 30 17 44 9(%) 49	 37 5 53 5(%) 68	50	43
Average	32.50	48.00	62.50	43.00	30.50
Median	32.50	48.00	62.50	43.00	30.50
Standard Deviation	2.12	1.41	7.78	9.90	17.68
Min	31.00	47.00	57.00	36.00	18.00
Max	34.00	49.00	68.00	50.00	43.00

■ 0-19.99 %ile 
 ■ 20-29.99 %ile 
 ■ 30-84.99 %ile 
 ■ 85 %ile and Above

There is a standard error rate for all scores which varies by measure. See the [knowledge base](#) for more information.

To enhance FAST system speed and performance, all percentile calculations are updated nightly from the day's assessment activities. Percentile calculations in this report reflects the prior day's scores.

# Group Growth Report: Early Reading English

START:  
2021-2022 : Fall

END:  
2021-2022 :  
Spring

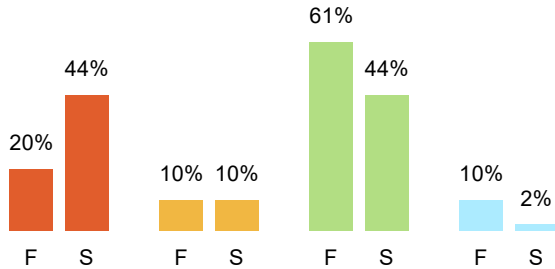
GROWTH %ILES:  
Growth by Start  
Score

COLOR CODING:  
Norms

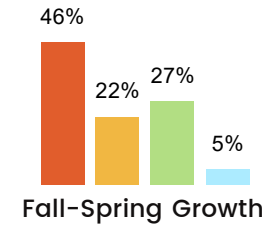
GROWTH:  
Weekly

END OF YEAR  
GOAL:  
Next Highest

### Scores Of All Students In Group By Normative Categories: ?



### Growth Of All Students In Group By Normative Categories: ?



Grade Level	Median Student		Weekly Observed Median Growth		Weekly Goal Median Growth		End of Year		
	Fall Score	Spring Score	Score	%ile	Score	%ile	Predicted Score	Goal Score	Benchmark Score
KG	34	58	0.69	21	-4.52	-	57.3	64.0	64.0
ONE	32	68	0.64	25	1.56	-	67.0	66.0	66.0
<b>Average</b>	33.00	62.75	0.67	-	-1.48	-	62.13	65.00	65.00
<b>Median</b>	33.00	62.75	0.67	-	-1.48	-	62.13	65.00	65.00
<b>Standard Deviation</b>	1.41	7.42	0.04	-	4.30	-	6.84	1.41	1.41
<b>Min</b>	32.00	57.50	0.64	-	-4.52	-	57.30	64.00	64.00
<b>Max</b>	34.00	68.00	0.69	-	1.56	-	66.97	66.00	66.00

■ 0-19.99 %ile    
 ■ 20-29.99 %ile    
 ■ 30-84.99 %ile    
 ■ 85 %ile and Above    
 n/a student assessed outside the screening window

National norms are based on the aggregated data from FAST users. They do not necessarily conform to the demographic distribution in the census. There is a standard error rate for all scores which varies by measure. See the knowledge base for more information.